



April 1997

EMBARGO: 11:30 AM (CANBERRA TIME) FRI 13 JUNE 1997

# **Personal Finance**

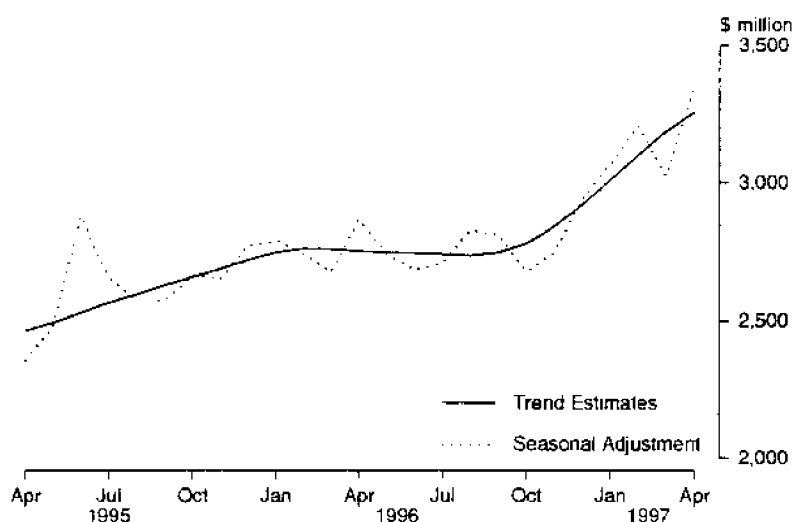
## **Australia**

## **Data Report**

© Commonwealth of Australia 1997

## MAIN FEATURES

## PERSONAL FINANCE, AUSTRALIA, APRIL 1995 – APRIL 1997



**1** The provisional trend estimate for personal finance commitments made by significant lenders in April 1997 was \$3 258.7 million, an increase of \$74.1 million (2.3%) on March 1997 and an increase of \$507.9 million (18.5%) on April 1996.

**2** Seasonally adjusted, personal finance commitments were \$3 349.7 million in April 1997, an increase of \$324.2 million (10.7%) on March 1997 and an increase of \$486.6 million (17.0%) on April 1996.

**3** In original terms, personal finance commitments in April 1997 were \$3 258.4 million, an increase of \$306.3 million (10.4%) on March 1997 and an increase of \$657.6 million (25.3%) on April 1996.

---

### INQUIRIES

- *for further information about these and related statistics*, contact Phillip Lui on (02) 9268 4263 or at <http://phillip.lui@abs.gov.au>.
  - *for information about other ABS statistics and services* please refer to the back cover.
-

**PERSONAL FINANCE COMMITMENTS: SUMMARY OF MOVEMENTS IN MAJOR AGGREGATES: Original, seasonally adjusted and trend estimates, APRIL 1997**

Type of facility	Percentage change from previous month			Percentage change from corresponding month of previous year		
	Original	Seasonally adjusted	Trend	Original	Seasonally adjusted	Trend
	%	%	%	%	%	%
Fixed Loans	7.2	10.7	1.1	11.2	1.8	2.3
Revolving Credit	15.0	10.7	3.9	51.3	44.8	49.2
Total	10.4	10.7	2.3	25.3	17.0	18.5

**PERSONAL FINANCE COMMITMENTS: MAJOR AGGREGATES: Original, seasonally adjusted and trend estimates**

Month	Commitments under fixed loan facilities			Commitments under revolving credit facilities			Total commitments		
	Original	Seasonally adjusted	Trend	Original	Seasonally adjusted	Trend	Original	Seasonally adjusted	Trend
	\$ million	\$ million	\$ million	\$ million	\$ million	\$ million	\$ million	\$ million	\$ million
1996 —									
February	1 852.8	1 875.2	1 833.8	748.1	864.9	926.4	2 600.9	2 740.1	2 760.2
March	1 909.9	1 847.8	1 826.9	741.8	824.7	930.4	2 651.7	2 672.5	2 757.3
April	1 686.1	1 850.3	1 800.8	914.7	1 012.7	950.1	2 600.8	2 863.1	2 750.8
May	1 925.4	1 766.7	1 765.5	1 056.4	972.1	981.8	2 981.8	2 738.7	2 747.3
June	1 704.5	1 650.1	1 730.9	1 112.9	1 032.0	1 013.3	2 817.4	2 682.1	2 744.1
July	1 874.9	1 618.5	1 706.3	1 311.8	1 088.7	1 033.4	3 186.7	2 707.2	2 739.7
August	1 696.2	1 790.4	1 695.6	1 078.6	1 038.6	1 039.4	2 774.8	2 829.0	2 734.9
September	1 687.5	1 797.4	1 702.9	1 008.3	1 011.1	1 043.2	2 695.8	2 808.5	2 746.1
October	1 763.9	1 630.7	1 720.2	1 212.1	1 044.0	1 059.5	2 976.0	2 674.7	2 779.7
November	1 574.4	1 663.8	1 741.2	1 049.2	1 083.6	1 098.8	2 623.6	2 747.4	2 840.0
December	1 665.3	1 811.1	1 760.6	1 133.8	1 123.7	1 158.0	2 799.0	2 934.8	2 918.6
1997 —									
January	1 725.1	1 817.8	1 780.9	1 017.3	1 251.8	1 229.0	2 742.3	3 069.5	3 009.9
February	1 780.1	1 864.2	1 802.4	1 097.4	1 342.0	1 299.4	2 877.5	3 206.2	3 101.9
March	1 748.4	1 700.5	1 820.8	1 203.7	1 325.0	1 363.8	2 952.1	3 025.5	3 184.6
April	1 874.1	1 883.2	1 841.3	1 384.2	1 466.5	1 417.4	3 258.4	3 349.7	3 258.7

TABLE 1 — PERSONAL FINANCE COMMITMENTS — APRIL 1997  
(\$ million)

Purpose of commitment by type of facility	Type of lender				Total
	All banks	Credit co-operatives	Finance companies	Others	
AUSTRALIA					
Commitments under fixed loan facilities —					
Purchase of					
Motor cars and station wagons					
New	67.0	24.2	115.3	24.1	230.7
Used	175.1	61.6	195.2	14.1	446.1
Other motor vehicles	16.5	1.7	15.4		33.6
Motor cycles, etc	7.7	3.7	3.2		14.6
Boats, caravans and trailers	13.1	3.1	5.4		21.6
Individual residential blocks of land	109.1	3.7	0.5	1.0	114.4
Household and personal goods	33.1	13.6	8.9	13.3	68.8
Owner-occupied housing (unsecured)					
Purchase and construction of dwellings	17.9	4.6	4.4		27.0
Alterations and additions to dwellings	26.4	13.8	0.7	0.1	41.1
Travel and holidays	13.2	8.8	3.4	0.1	25.5
Debt consolidation	131.1	39.4	8.2	0.4	179.1
Refinancing	306.1	21.1	19.1	0.4	346.7
Other	233.4	43.7	42.5	5.4	325.0
<b>Total fixed loan commitments</b>	<b>1,149.8</b>	<b>242.9</b>	<b>422.4</b>	<b>59.0</b>	<b>1,874.1</b>
Commitments under revolving credit facilities(b)					
New and increased credit limits					
Secured	722.2	7.9	1.1		731.2
Unsecured	575.0	19.2	33.0	25.8	653.1
<b>Total revolving credit commitments</b>	<b>1,297.2</b>	<b>27.1</b>	<b>34.1</b>	<b>25.8</b>	<b>1,384.2</b>
<b>Total personal finance commitments</b>	<b>2,447.0</b>	<b>270.0</b>	<b>456.5</b>	<b>84.8</b>	<b>3,258.4</b>
STATES(c)					
New South Wales	797.5	115.1	145.0	30.5	1,088.1
Victoria	560.3	35.4	106.8	25.9	728.4
Queensland	464.7	36.9	85.2	14.7	601.5
South Australia	181.3	35.2	29.9	4.7	251.0
Western Australia	339.1	23.1	67.0	6.4	435.6
Tasmania	38.7	10.3	n.p.	n.p.	59.9
Northern Territory	20.0	5.5	n.p.	n.p.	32.2
Australian Capital Territory	45.5	8.5	7.2	0.4	61.6

(a) Includes commitments to refinance loans where the principal purpose is for alterations and/or additions to dwellings. (b) Includes credit card facilities. (c) From July 1996 finance companies and Other lenders data is not available for publication for Tasmania and the Northern Territory, but is included in totals where appropriate.

TABLE 2 — PERSONAL FINANCE COMMITMENTS — ALL LENDERS

		Commitments under fixed loan facilities for -													
		Purchase of					Owner-occupied housing (unsecured)								
		Motor cars and station wagons		Used											
		New													
YEARS	Number	\$ m	Number	\$ m	Motor cycles, etc \$ m	Other motor vehicles \$ m	Total motor vehicles \$ m	Boats, caravans and trailers \$ m	Individual residential blocks of land \$ m	Household and personal goods \$ m	Purchase and alterations and additions to dwellings \$ m	additions to dwellings(a) \$ m			
AUSTRALIA															
1993-1994	109,568	2,044.3	436,469	4,470.0	105.5	328.8	6,948.5	189.3	1026.9	532.2	188.4	345.9			
1994-1995	131,105	2,623.7	467,665	5,135.5	127.6	400.2	8,287.0	222.2	1063.1	541.4	239.8	386.3			
1995-1996	139,715	2,505.3	489,333	5,558.0	151.2	433.6	8,648.1	222.1	1120.2	565.1	292.1	412.6			
1996															
February	10,939	208.9	42,504	480.5	13.4	34.0	736.9	21.8	90.3	48.4	25.3	38.1			
March	11,131	217.4	42,371	484.0	14.6	35.8	751.8	21.0	80.8	52.3	27.5	38.7			
April	10,574	207.6	38,845	445.7	12.9	35.0	701.2	18.0	83.0	49.5	27.6	35.8			
May	12,411	239.8	43,794	508.8	13.9	38.8	801.3	19.2	95.9	59.3	22.7	39.4			
June	11,357	221.8	38,482	447.7	11.7	35.5	716.6	16.4	78.4	52.7	20.2	31.1			
July	11,727	229.5	40,903	482.8	13.6	40.2	766.1	19.6	98.9	62.0	25.7	33.6			
August	10,865	212.8	39,365	462.8	13.7	38.2	727.5	20.8	92.4	58.2	27.6	32.6			
September	10,486	211.5	37,588	440.0	14.0	35.6	701.1	21.5	80.3	52.1	26.7	32.8			
October	11,105	224.6	40,412	475.6	16.0	41.1	757.3	23.1	101.3	60.1	29.1	42.0			
November	9,987	203.6	35,013	408.8	15.4	32.7	660.5	38.8	94.9	61.4	30.1	42.3			
December	10,190	207.1	34,629	414.5	14.0	34.5	670.1	27.8	92.8	59.6	27.6	40.6			
1997															
January	11,651	228.9	37,547	457.1	12.7	35.6	734.2	23.4	92.2	62.0	20.2	35.1			
February	10,930	210.5	38,481	456.9	13.6	36.6	717.5	24.1	110.9	64.0	24.1	37.2			
March	11,102	208.0	34,991	417.2	12.2	34.2	671.5	20.3	106.8	65.7	21.4	37.0			
April	11,696	230.7	37,121	446.1	14.6	33.6	725.0	21.6	114.4	68.8	27.0	41.1			
STATES MARCH 1997															
NSW	4,011	75.0	11,429	130.9	3.7	9.2	218.9	6.0	29.3	29.1	11.3	13.9			
Vic.	2,532	53.5	8,187	99.6	2.6	9.8	165.5	4.4	25.4	15.1	5.1	8.2			
Qld	2,334	32.5	6,389	76.6	2.7	5.6	117.3	4.1	27.1	9.7	3.6	6.1			
SA	635	13.5	3,134	34.1	1.0	2.4	51.1	1.3	5.0	3.3	1.0	2.4			
WA	1,119	24.2	3,986	55.5	1.5	6.0	87.2	2.6	16.3	5.9	1.1	2.7			
Tas.	125	2.2	963	9.3	0.3	0.6	12.4	0.5	1.2	1.4	0.6	1.5			
N.T.	110	2.5	418	5.3	0.2	0.2	8.2	1.2	1.4	0.4	0.4	1.1			
ACT	236	4.5	485	5.8	0.2	0.2	10.8	0.2	1.1	0.8	0.7	1.0			
STATES — APRIL 1997															
NSW	4,510	81.8	11,689	138.2	5.8	7.8	233.5	7.1	27.5	30.9	11.6	15.9			
Vic.	2,889	60.4	8,744	105.7	2.9	10.0	179.1	4.5	30.2	15.3	6.0	9.5			
Qld	1,843	35.4	7,014	82.8	2.7	5.5	126.4	4.9	28.1	10.9	3.2	5.7			
SA	702	15.4	3,255	36.7	1.0	3.2	56.2	1.1	5.0	3.0	1.2	2.0			
WA	1,237	27.7	4,227	58.4	1.4	5.9	93.3	2.6	20.9	6.0	2.5	3.6			
Tas.	142	2.1	1,167	11.3	0.3	0.8	14.5	0.5	1.3	1.7	0.9	1.9			
N.T.	120	2.8	488	6.6	0.2	0.3	9.8	0.6	0.8	0.3	0.1	1.3			
ACT	253	5.1	517	6.4	0.3	0.3	12.1	0.2	0.8	0.8	1.5	1.1			

(a) Includes commitments to refinance loans where the principal purpose is for alterations and/or additions to dwellings.

TABLE 2 — PERSONAL FINANCE COMMITMENTS — ALL LENDERS—continued  
(\$ million)

YEARS	Commitments under fixed loan facilities for (cont.)					Commitments under revolving credit facilities(a)					Total fixed loans and revolving credit commitments	
	Travel and holidays	Debt consolidation	Refinancing	Other	Total fixed loan commitments during period	New and increased credit limits during period		Cancellations and reductions of credit limits during period		Credit limits at end of period		
						Secured	Unsecured	Total	Total	Used		
AUSTRALIA												
1993 1994	289.6	1,658.5	2,994.1	2,386.9	16,556.2	2,718.6	6,178.3	8,896.9	7,203.4	37,792.1	16,060.7	25,453.2
1994 1995	301.0	1,502.4	3,466.2	2,613.4	18,623.0	4,090.9	5,800.0	9,890.9	7,326.1	40,523.9	16,766.8	28,513.9
1995-1996	327.0	1,872.5	4,155.6	3,321.2	20,936.4	4,093.4	7,257.0	11,350.4	7,774.4	44,418.9	18,053.0	32,286.8
1996												
January	27.1	160.6	378.2	325.9	1,852.8	287.0	461.1	748.1	518.9	42,750.6	17,488.5	2,600.9
February	32.1	175.0	393.3	337.2	1,909.9	283.1	458.7	741.8	479.4	43,018.6	17,406.4	2,651.7
March	31.1	150.1	320.2	269.6	1,686.1	269.9	644.9	914.7	629.7	43,309.8	17,698.2	2,600.8
April	36.4	170.4	363.2	317.8	1,925.4	373.7	682.7	1,056.4	503.2	43,859.2	17,806.2	2,981.8
May	34.5	151.9	309.8	290.8	1,704.5	489.6	623.3	1,112.9	558.8	44,418.9	18,053.0	2,817.4
June	33.7	174.7	378.4	282.2	1,874.9	549.1	762.7	1,311.8	707.0	45,037.5	18,416.7	3,186.7
July	29.2	162.3	297.0	248.7	1,696.2	541.0	537.6	1,078.6	538.0	45,555.0	18,170.7	2,774.8
August	34.7	161.1	281.6	305.6	1,687.5	453.8	554.5	1,008.3	519.2	46,048.6	18,629.2	2,695.8
September	42.0	153.5	294.8	270.6	1,763.9	504.1	708.0	1,212.1	712.5	46,696.4	18,863.9	2,976.0
October	26.3	141.4	246.7	232.0	1,574.9	479.9	609.2	1,049.2	429.3	47,369.3	19,182.7	2,623.6
November	33.5	145.7	273.8	293.8	1,665.3	492.5	641.3	1,133.8	546.5	47,940.8	19,999.4	2,799.0
December												
1997												
January	24.2	146.2	269.8	317.8	1,725.1	475.6	541.7	1,017.3	733.6	48,251.7	20,173.3	2,742.3
February	26.1	160.0	288.1	328.1	1,780.1	526.4	571.0	1,097.4	488.2	48,868.4	20,364.0	2,877.5
March	26.5	171.4	310.6	315.2	1,748.4	634.8	568.9	1,203.7	678.8	49,391.8	20,461.6	2,952.1
April	25.5	179.1	346.7	325.0	1,874.1	731.2	653.1	1,384.2	762.7	49,649.9	20,388.1	3,258.4
STATES — MARCH 1997												
NSW	10.4	51.5	117.5	97.9	586.0	218.6	185.4	404.0	241.4	18,654.5	7,708.2	989.9
Vic.	4.9	31.0	64.6	70.1	394.3	112.9	133.9	246.8	134.1	11,603.9	4,782.0	641.1
Qld	3.9	13.1	62.8	53.2	330.9	132.0	114.7	246.7	89.3	8,669.5	3,800.3	567.6
SA	2.1	12.9	21.4	18.8	119.2	84.3	38.5	122.8	59.4	3,523.3	1,130.0	242.0
WA	3.6	16.7	28.4	61.0	245.6	64.9	70.7	135.6	78.6	4,701.5	1,946.5	381.2
Tas.	0.7	1.8	5.4	5.6	31.2	5.0	10.0	15.0	57.4	879.5	332.6	46.2
NT	0.3	1.4	4.2	2.9	21.1	3.2	4.7	7.9	3.5	297.5	117.4	28.9
ACT	0.6	3.0	6.3	5.8	30.3	14.0	11.0	24.9	15.1	1,062.1	444.7	55.2
STATES — APRIL 1997												
NSW	9.1	53.3	127.8	101.3	618.1	253.2	216.9	470.1	277.8	18,589.3	7,510.3	1,088.1
Vic.	6.3	37.7	81.4	71.9	442.0	132.6	153.8	286.4	189.5	11,650.9	4,787.2	728.4
Qld	3.4	33.0	63.2	52.0	330.8	142.4	128.4	270.8	126.7	8,780.2	3,847.7	601.5
SA	2.1	11.5	21.5	17.5	121.1	87.9	42.0	129.9	60.0	3,590.8	1,372.8	251.0
WA	3.0	17.5	34.0	68.1	271.6	83.4	80.6	164.0	50.6	4,795.1	1,970.9	435.6
Tas.	0.7	2.1	7.5	5.9	36.9	9.6	13.4	23.0	35.0	867.5	330.1	59.9
NT	0.2	1.3	4.1	3.1	21.7	4.0	6.5	10.5	4.5	303.5	119.3	32.2
ACT	0.5	2.6	7.2	5.1	32.1	18.1	11.4	29.6	18.7	1,072.7	449.7	61.6

(a) Includes credit card facilities.



## **For more information . . .**

The ABS publishes a wide range of statistics and other information on Australia's economic and social conditions. Details of what is available in various publications and other products can be found in the ABS Catalogue of Publications and Products available from all ABS Offices.

### **ABS Products and Services**

Many standard products are available from ABS bookshops located in each State and Territory. In addition to these products, information tailored to the needs of clients can be obtained on a wide range of media by contacting your nearest ABS Office. The ABS also provides a Subscription Service for standard products and some tailored information services.

### **National Dial-a-Statistic Line**

0055 86 400

*Steadycorn P/L: premium rate 25c/21.4 secs.*

This number gives 24-hour access, 365 days a year, for a range of important economic statistics including the CPI.

### **Internet**

<http://www.abs.gov.au>

A wide range of ABS information is available via the Internet, with basic statistics available for each State, Territory and Australia. We also have Key National Indicators, ABS product release details and other information of general interest.

## **Sales and Inquiries**

Keylink STAT.INFO/ABS  
X.400 (C:Australia,PUB:Telememo,O:ABS,FN:STAT,SN:INFO)  
Internet [stat.info@abs.telememo.au](mailto:stat.info@abs.telememo.au)

National Mail Order Service (06) 252 5249  
Subscription Service 1800 02 0608

	<b>Information Inquiries</b>	<b>Bookshop Sales</b>
SYDNEY	(02) 9268 4611	9268 4620
MELBOURNE	(03) 9615 7755	9615 7755
BRISBANE	(07) 3222 6351	3222 6350
PERTH	(09) 360 5140	360 5307
ADELAIDE	(08) 8237 7100	8237 7582
HOBART	(03) 6220 5800	6220 5800
CANBERRA	(06) 252 6627	207 0326
DARWIN	(08) 8943 2111	8943 2111

Information Services, ABS, PO Box 796, Sydney NSW 2001

